

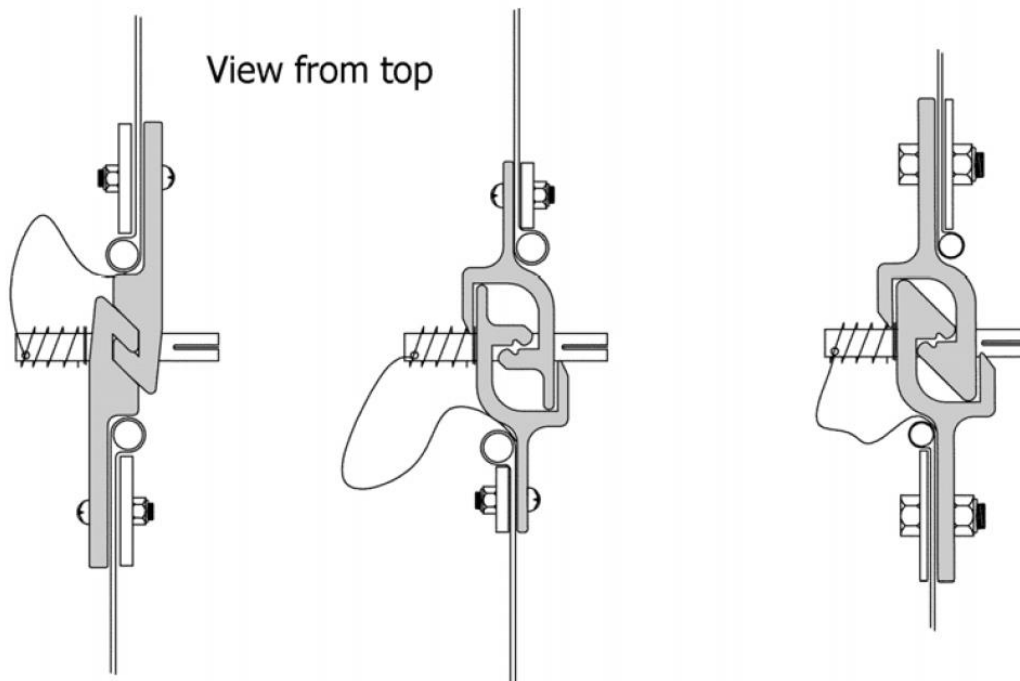
## Connector

Version: 1.0  
Revised: 27.02.2014

For Passive Oil Booms

### 1. Description

Booms can be supplied with a choice of section connectors.  
Our booms are fitted as standard with left handed ASTM Slide type connectors because they are the strongest.  
All connectors are compatible with each other (if same orientation – left handed).



ASTM "Z" connector

Light Duty  
Mini Slide Connector

ASTM Slide Connector

# PRODUCT INFORMATION

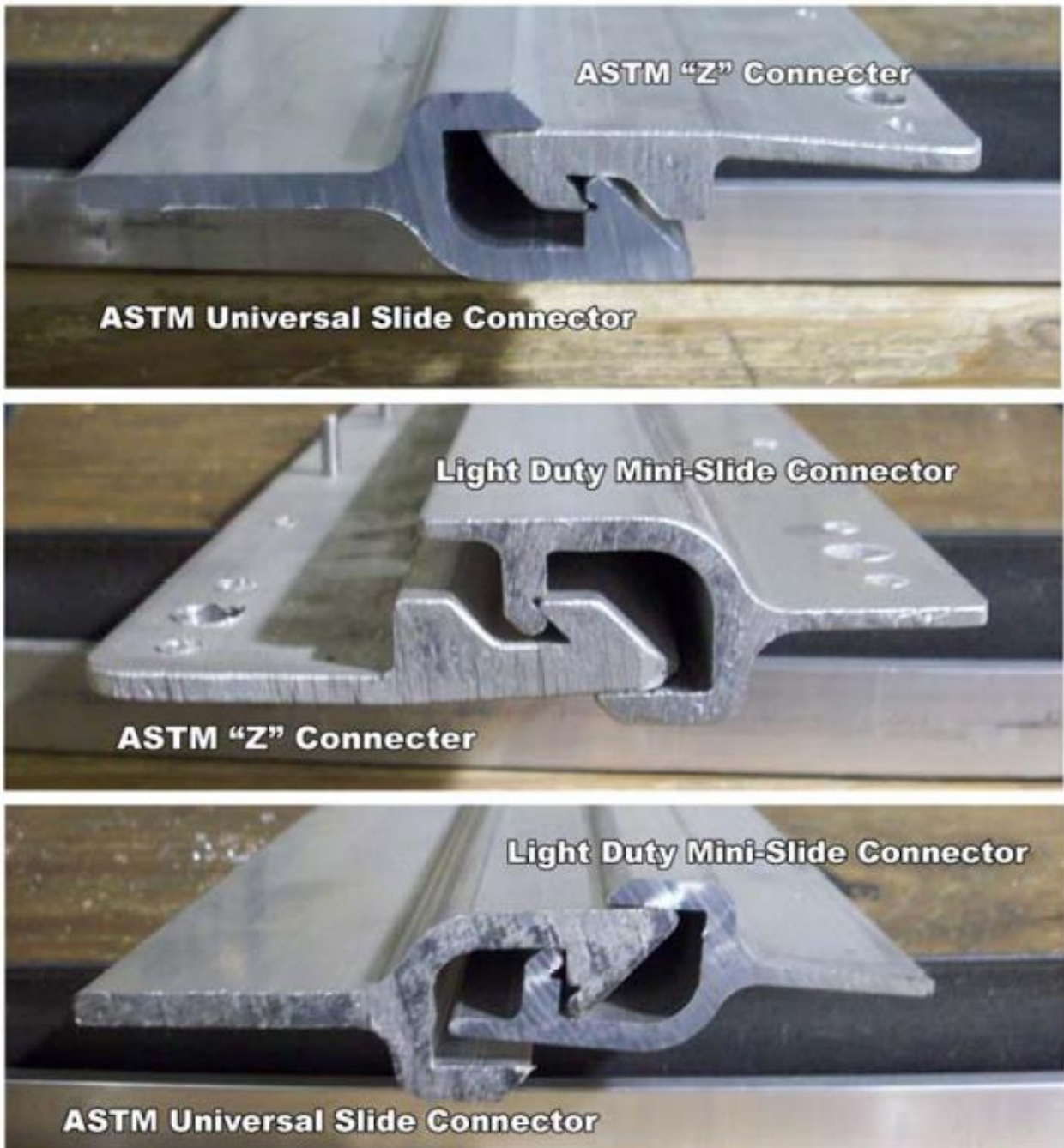
## Connector

Version: 1.0  
Revised: 27.02.2014

For Passive Oil Booms

### 2. Compatibility

All connectors are compatible:

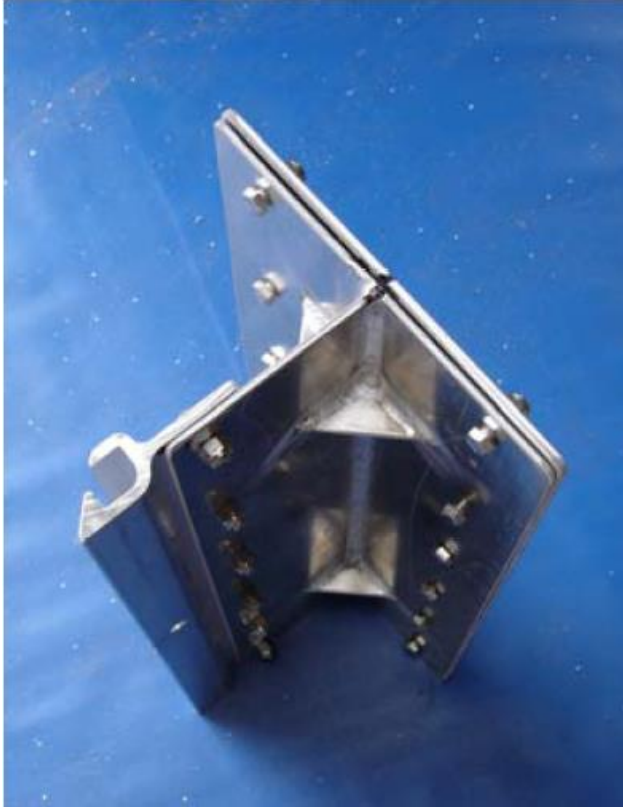


## Connector

Version: 1.0  
Revised: 27.02.2014

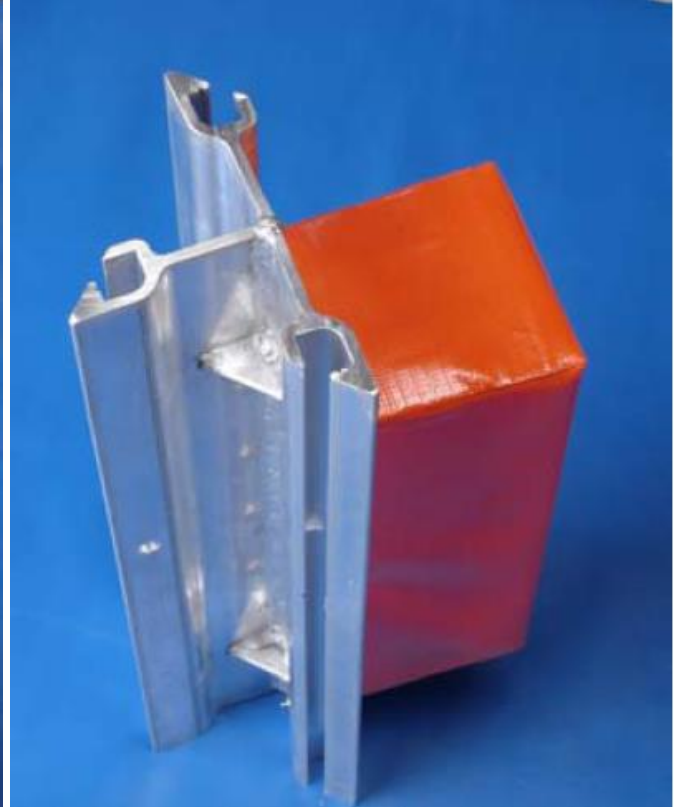
For Passive Oil Booms

### 3. Special Adaptors



**T-Connector**

Can be bolted onto a permanent belt installation



**3-Way Connector**

Can be used to intersect three sections of booms